

MODERN LIGHTING MANAGEMENT

Model Number : GOTT-MLM-1



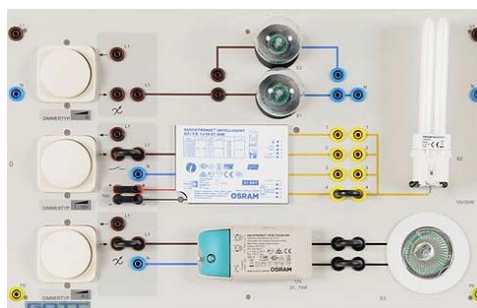
PRODUCT MODULES

INSTALLATION BOARD, DIMMERS FOR FILAMENT, HALOGEN & COMPACT FLUORESCENT LAMP

CODE
100-605

GOTT-IBD-HC01 contains all components required for configuring various dimmer circuits

- Module
 - 1 Dimmer for incandescent lamps
 - Dimmer for low-voltage halogen lamps
 - 1 Dimmer for compact fluorescent lamps
 - 1 Electronic transformer with a dimming function
 - 1 Electronic ballast with a dimming function
 - 1 Incandescent lamp, E14, 25W
 - 1 Low voltage halogen lamp, 12V/50W
 - 1 Compact fluorescent lamp, 18W
- Nominal voltage: 230V
- Frequency: 50/60Hz
- Inputs and output: 2mm and 4mm safety sockets



SINGLE PHASE POWER SUPPLY WITH SWITCH, CIRCUIT BREAKER AND EARTH CONTACT SWITCH

CODE
100-609

- Power supply 230 V/16 A
 - Automatic circuit breaker 16 A
 - Main switch
 - Earth-contact socket
 - Output: 4-mm safety sockets



WIRING INSTALLATION BOARD: ENERGY EFFICIENT LIGHTING, DIMMABLE WITH DALI CONTROL

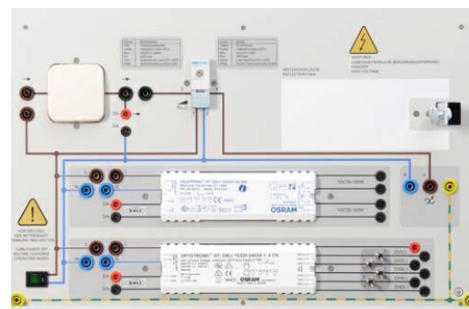
CODE
100-630

FEATURES

GOTT-WIB-EELDDC covering various types of lighting used in buildings. The module can be used to study not only room lighting options, but also lighting for effect and spotlighting. The lights themselves are included with the board. Lights are anti-glare models, allowing students to learn without distracting dazzle.

TECHNICAL SPECIFICATION

- Lamp socket, E14/230 V
- Bayonet (bi-pin) socket, G4/12 V
- Bayonet (bi-pin) socket, GU10/230 V
- Push button switch
- RLC – universal dimmer
- DALI dimmable ballast for halogen lamps
- DALI ballast for LED colour lighting
- 4-mm/2-mm safety sockets

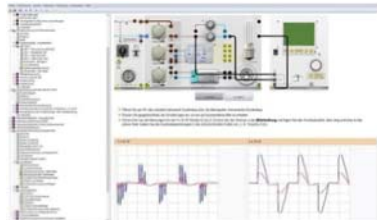


MODERN LIGHTING MANAGEMENT

Model Number : GOTT-MLM-1

INTERACTIVE LAB ASSISTANT: ENERGY EFFICIENT LIGHTING

CODE
100-631



SPECIFICATION

GOTT-ILA-EFL uses various types of lighting components and their respective control systems to demonstrate how energy can be saved and how much work is required to achieve this. This knowledge then forms the basis for energy-efficient lighting management

- Lighting components (incandescent bulbs, halogen bulbs, fluorescent lights, LEDs), their properties and efficiency
- Energy saving
- Dimming methods
- Types of dimmer
- Appliances
- Proper use of lights, appliances and dimmers
- Fundamentals of lighting management (DALI)
- Installation instructions
- Diagnostics by means of a multimeter or oscilloscope

The multimedia experiment software with virtual instruments, instructions and documentation of results on the topic of "energy-efficient lighting" consists as follows:

- Interactive experiment set-ups
- Questions with feedback and evaluation logic for testing students knowledge
- Printable document so that experiment instructions and solutions can be printed out easily Available in English

DIGITAL/ ANALOG MULTIMETER, WATTMETER, POWER FACTOR INCLUDED SOFTWARE

CODE
100-608



- Measuring of voltage, current, active, apparent and reactive power as well as the power factor
- USB interface
- Operating voltage: 230V, 50/60Hz
- Automatic or manual measurement range selection
- Software Included
- Measurement accuracy: 2%

EXPERIMENT TOPICS

- Familiarisation with various lighting components
- Energy saving
- Dimming methods
- Proper use of lights, appliances and dimmers
- Fundamentals of lighting management (DALI)
- Diagnostics by means of a multimeter or oscilloscope

Manuals :

- (1) All manuals are written in English
- (2) Model Answer
- (3) Teaching Manuals

GeneralTerms :

- (1) Accessories will be provided where applicable.
- (2) Manuals & Training will be provided where applicable.
- (3) Designs & Specifications are subject to change without notice.
- (4) We reserve the right to discontinue the manufacturing of any product.

Warranty :

2 Years

ORDERING INFORMATION :

ITEM	MODEL NUMBER	CODE
MODERN LIGHTING MANAGEMENT	GOTT-MLM-1	100-700

*Proposed design only, subject to changes without any notice.