



- Handheld XRF Spectrometer <
- » TrueX TCB XRF Analyzer
- » TrueX Alloy analyzer
- » TrueX One analyzer
- » TrueX Soil heavy metal analyzer
- » TrueX RoHS analyzer
- » TrueX Precious metal analyzer
- » TrueX COATXRF Analyzer
- Portable XRF Spectrometer <
- » PeDX OIL Portable XRF Analyzer
- » PeDX GOLD Portable XRF Analyzer
- » PeDX COAT Analyzer
- » PeDX CSA Consumer Product Analyzer
- Desktop XRF Spectrometer <
- » ScopeX CSA
- » ScopeX GOLD Portable XRF Analyzer
- » ScopeX COAT XRF Analyzer
- » ScopeX ASH Analyzer
- » ScopeX Universal XRF Analyzer
- Online-XRF <
- » Atmospheric Heavy Metal Analyzer
- » SpebX
- HPLC <
- X-ray diffraction (XRD) <
- » Shine Portable XRD Analyzer
- Raman Spectrometer <
- » RA200 Handheld Raman Spectrometer
- » Portable XRF- Raman analyzer
- WDXRF spectrometer <
- » Portable single WDXRF spectrometer
- » YANG 700F food heavy Metal Rapid Analyzer

- Quick Access >
- Introduction
- Service & support
- News

PeDX CSA Consumer Product Analyzer

> Products > PeDX CSA Consumer Product Analyzer

PeDX CSA 660 Portable RoHS Analyzer

Product advantage

The instrument is mainly used for the detection of hazardous elements specified in RoHS, halogen-free and ELV environmental protection directives

- 1.Products controlled by RoHS Directive: large household appliances, small household appliances, information technology and communication equipment, electric tools, toys and other equipment;
- 2.Products controlled by halogen-free Directive: products with Flame Retardants Containing Cl, Br and other elements as raw materials;
- 3.Screening and analysis of ELV instructions: structural analysis of various mechanical parts and detection of coating thickness and adhesion amount of chemical synthetic outer film.

Performance advantages

1. One key intelligent operation

The whole analysis process can be completed in a few seconds, and the operation is simple, even for non-technical personnel.

2. Easy to customize

On the basis of testing, it provides a variety of user-defined settings, which can change the test conditions according to the needs of testing, and also change the threshold according to the needs of screening, so as to realize the personalized screening of different materials and different elements.

3. Multi form data output

The analysis data report can be made in PDF format or excel format. When you export data in Excel format, you can also confirm and edit the data in detail in the table. Users can also customize and create professional reports, including company logo, company address, test results, spectrogram and other sample information (such as product description, origin, batch number, etc.).

4. Accurate and reliable qualitative and quantitative methods

The integration of super FP algorithm, correction curve method and other advanced algorithms makes the instrument not only faster, more accurate and more consistent.

Hotline  
400-992-0512

Application range

The instrument is mainly used for the detection of hazardous elements specified in RoHS, halogen-free and ELV environmental protection directives

- 1.Products controlled by RoHS Directive:

large household appliances, small household appliances, information technology and communication equipment, electric tools, toys and other equipment;

2. Products controlled by halogen-free Directive: products with Flame Retardants Containing Cl, Br and other elements as raw materials;
3. Screening and analysis of ELV instructions: structural analysis of various mechanical parts and detection of coating thickness and adhesion amount of chemical synthetic outer film.

Technical parameters and specifications

Instrument size	200 (L) *200 (W) *268 (H)
Sample cabin size	170 (L) *130 (W) *60 (H)
Total weight	4.1kg
X-ray tube of excitation source	50KV max, 200uA max, upper excitation power 4W
Detector	SDD Detector
Operating system	based on i.mx6 Quad quad core cortex-a9 processor
Dedicated analysis level operating system	32GB system memory
Power supply system	intelligent battery with msbus bus, real-time monitoring battery and standby battery can directly check the remaining capacity of battery, which conforms to regulations on transportation of aviation dangerous goods. Single battery can work for about 8 hours
Resolution	< 136ev
Data transmission USB	Bluetooth
Operating environment temperature	-20 °C ~50 °C
Operating environment humidity	10% - 90% relative humidity, non condensing
Display	5.7 "retractable color touch screen display
Measurement time	user defined
Safety protection	built in ray protection device (automatic cut-off) Safety interlock, only when power is on can the instrument be opened (sealing performance).Radiation indicator

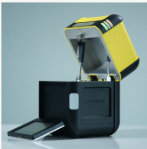
Relevant standards

Regulations and test methods of hazardous substances applicable to the instrument:

- 1.Response to halogen free directive iec61249-2-21
- 2.Response to reach
- 3.Response to EN71 directive
- 4.Response to CPSIA Consumer Product Safety Improvement Act
- 5.China RoHS voluntary certification
- 6.Comply with iec62321 standard
- 7.Comply with GB / t26125-2011
- 8.China RoHS Directive (ACPEIP)
- 9.Japan RoHS
- 10.RoHS directive of South Korea

Related video

Related products



PeDX CSA Consumer Product Analyzer  
**PeDX CSA 600 Portable RoHS Analyzer**  
Product advantageThe full English name of RoHS is res...  
[Know more](#)  
[MORE](#)



PeDX CSA Consumer Product Analyzer  
**PeDX CSA 600F Portable RoHS Analyzer**  
Product advantageThe instrument is mainly used for th...  
[Know more](#)  
[MORE](#)

LANScientific co., ltd.

SUZHOU LANScientific Co.,Ltd. is a professional manufacture, production and sale of portable X fluorescence analysis instrument of the provincial high-tech enterprises. The company has the domestic first-class team of experts X fluorescence analysis technology, with strong technical strength, advanced technology, service concept and advanced management mode...

[READ MORE](#)

Copyright © 2016 SUZHOU LANScientific Co.,Ltd. Support: Wenhua Su ICP for the preparation of 10115923-1  
Friendship link:

NEWS

[READ MORE](#)

Contact us

Historical event

Join us

Let



在线咨询