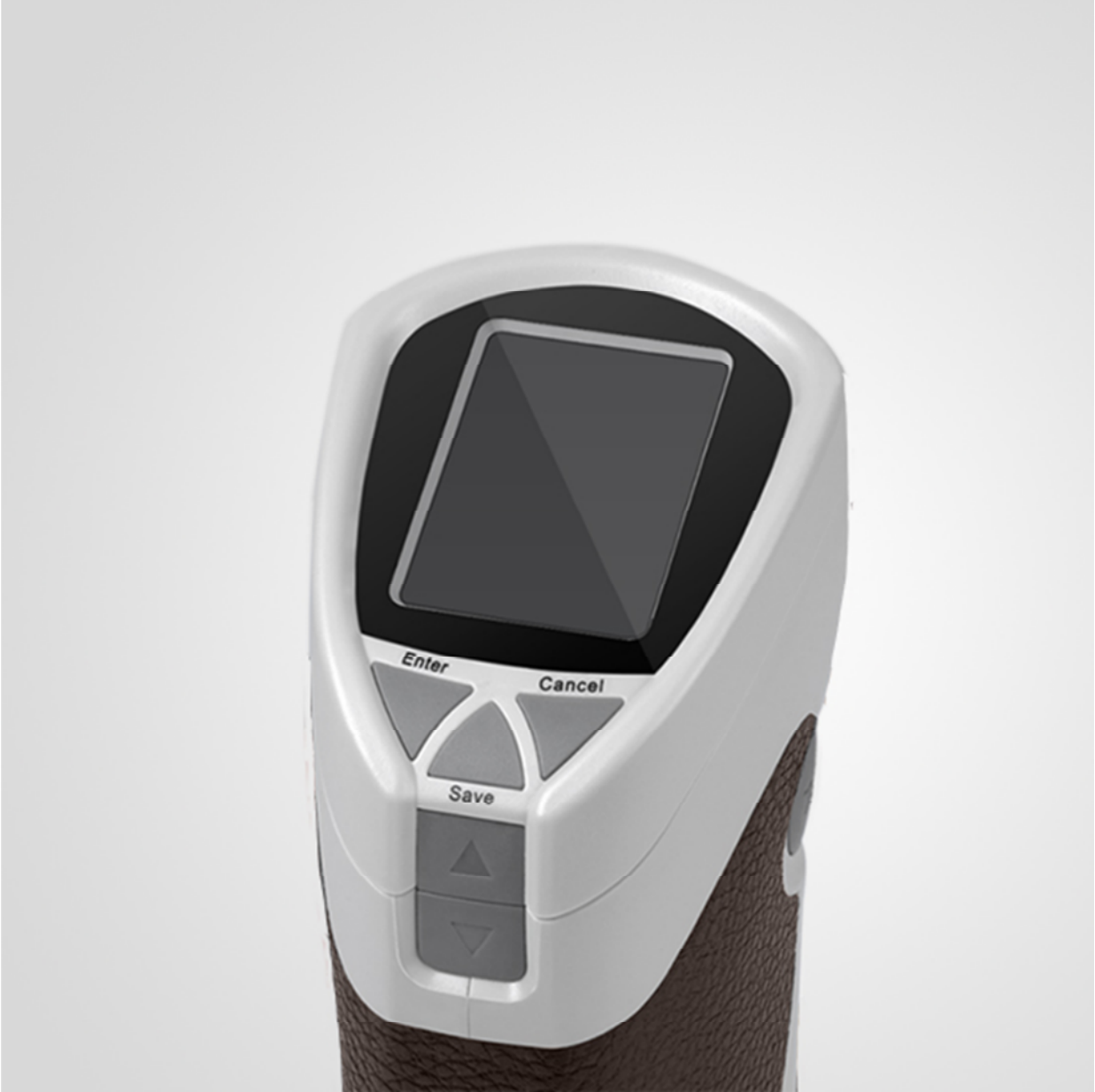


### High performance-price ratio among international similar products

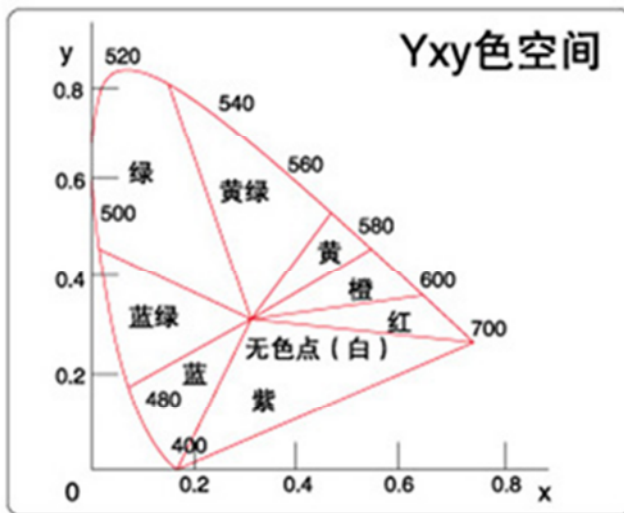
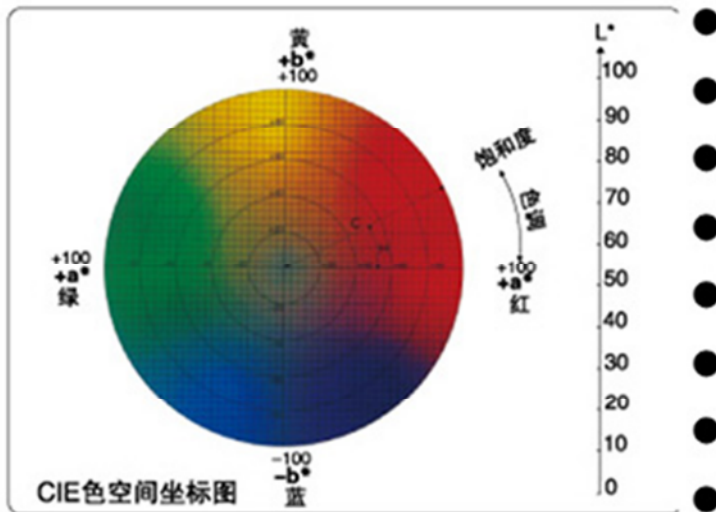
- Both Chinese and English language options
- Ultra stable performance
- Display precision 0.01
- Repeatability precision AE's standard deviation 0.1
- Enhance the measure accuracy through white and black calibration





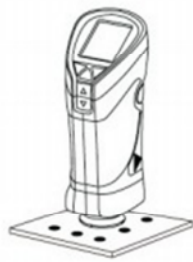
**Professional design, powerful instrument functions**

- Human engineering design
- Large data storage space
- Multiple modes of color values
- PC software and data control
- USB for data transmission
- Provides accurate measuring time settings
- Can manually set up L\*a\*b\* value for standard samples
- Suitable for a company's internal and external color evaluation and data control

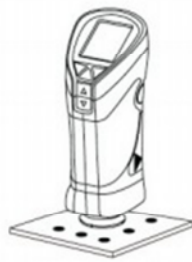


### Test color deviation

- Put the instrument evenly on a flat sample, test.



Standard samples 1--100



Test samples 1--100

- Put the instrument evenly on a flat sample, and perform multipoint sampling average, or measure multiple spots for averaging.



▲Transparent baseboard  
test hole



▲white board



▲hohlraum

- Human engineering design
- Large data storage space
- Multiple modes of color values
- PC software and data control
- USB for data transmission
- Provides accurate measuring time settings
- Can manually set up L\*a\*b\* value for standard samples
- Suitable for a company's internal and external color evaluation and data control

### Specifications

Illumination system	8/d (8°/diffused illumination) , specular component included (SCI)
Display modes	Colorimetric values: L*a*b, L*C*h, ΔE*ab, XYZ, relative RGB values; Color difference values: Δ(L*a*b), Δ(L*C*h);
Measuring caliber	About 8mm
Measuring conditions	CIE 10° standard observer; CIE D65 light source
Measuring range	L* : 1-100
Repeatability	Standard deviation within ΔE*ab*, 0.1(condition: measure the white calibration board 30 times for average)
Storage	100 sets of standard samples; up to 100 under each standard sample
Measuring time	About 0.5 seconds
Measuring light source	LED
Interface languages	Chinese,English
Power source	Four AA1.5V Alkaline battery or nickel-metal hydride batteries;Exclusive DC5V adapter
port	USB 2.0, printer
weight	550g
Size	77×86×210mm